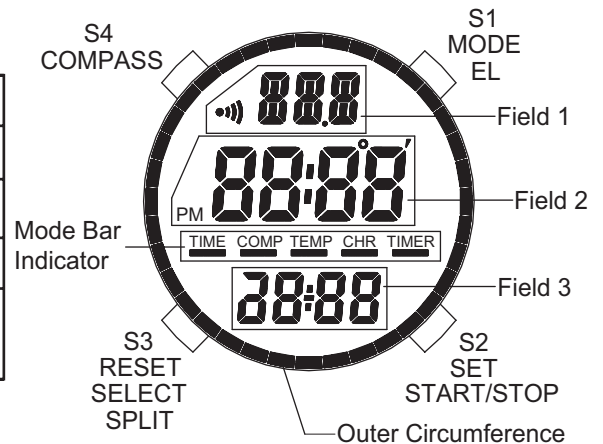


# DT 610 COMPASS WATCH OPERATING INSTRUCTIONS

## FEATURES

Large LCD display	4 daily alarms
Electro-Luminescent back light	Stopwatch
Water resistant	Countdown timer
12/24 hour format	Compass
Auto calendar (month, date, day of week)	Temperature, user selectable °F or °C



## Functional Specifications

### EL backlight

Hold S1 for 1 sec to light up, the light remains on for 5sec from the last press of any button.

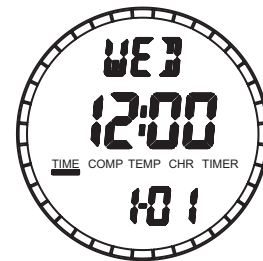
### Time Mode

Field 1: day of week.

Field 2: current time.

Field 3: month/day or seconds.

PRESS [S2] to toggle between month/day and seconds.



### How to Set the Time

1. Hold [S3] 1 second to enter the time set mode. The "HR" digit will flash. PRESS [S2] to adjust the hours.
2. At the desired hours, PRESS [S1] sequentially to go to setting of "MIN", "SEC", "12/24Hr", "YR", "MTH" and "DAY" with the corresponding digits flashing.
3. Press [S2] to adjust the flashing digits.
4. At the desired date, PRESS [S3] to exit time set mode or PRESS [S1] to go through the time setting process again (step 1-3). Time set can be completed any time by pressing [S3].

### Daily Alarm Mode

It allows the user to select and enter settings for up to four alarms.

Field 1: AL1, AL2, AL3 or AL4

Field 2: alarm time.

Field 3: "ON" or "OFF" (the activation status of that alarm).

If any of the alarms is activated, a "•••" icon is displayed in Field 1 in all modes.

When the set alarm is reached, the alarm sounds for 30sec or until any button is pressed.

### How to Set the Daily Alarms

1. From TIME mode PRESS [S3] to select AL1, AL2, AL3 or AL4.
2. Press [S1] to sequentially select "ON/OFF", "AL HR" and "AL MIN" with the corresponding digits flashing, Press [S2] to set the flashing digits.
3. At the desired alarm minutes, PRESS [S1] to complete alarm time setting. PRESS [S3] again to go to the next alarm. To activate other alarms, repeat steps 1-3 for the selected alarm (AL1, AL2, AL3 & AL4).

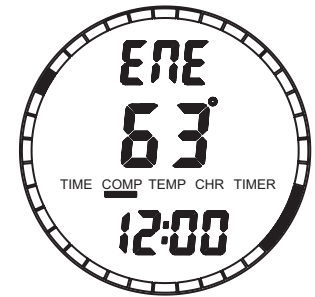
## Compass Mode

User needs to place the watch horizontally to obtain precise compass reading.

The compass function provides the user with:

A cardinal abbreviation for the direction

- Bearing in degrees
- A North-South arrow
- Resolution: 1°
- Accuracy:  $\pm 5^\circ$  at North-South ( $0^\circ$ ) direction.



Field 1: cardinal point of the 12 O'clock direction of the watch.

Field 2: the bearing in degrees of the 12 O'clock direction of the watch.

Field 3: current time

The Outer Circumference graphically displays the North-South arrow, for which the one-lit segment shows the north and the three-lit segment shows the south.

The compass enters “sleep” mode and an “--°” indicator appears in Field 2. Press [S4] to reactivate the compass measurement.

### Calibrating the compass

A compass calibration should be done when it is subject to close proximity of magnetic sources, extreme cold weather, after battery replacement or suspected severe environmental changes. If the compass is not showing the direction correctly, Place the watch horizontally on a flat surface. Hold [S3] for 1 sec to enter the compass calibration mode. A dot at the circumference starts moving clockwise immediately. Turn the watch slowly anti-clockwise in such a way that the moving dot at the circumference is always roughly pointing to the same direction. Continue this for 2 full circles until the calibration process is complete with the display returned to compass display.

During Calibration the display is as follows:

Field 1: “ CAL ”

Field 2: calibration indicator “ [ ] ”

Field 3: current time

## Temperature Mode

Temperature range:  $-10^\circ\text{C}$  to  $40^\circ\text{C}$ .

Temperature resolution:  $\pm 1^\circ\text{C}$ .

Field 1: day of week

Field 2: current temperature

Field 3: current time

PRESS [S2] to toggle between °F or °C



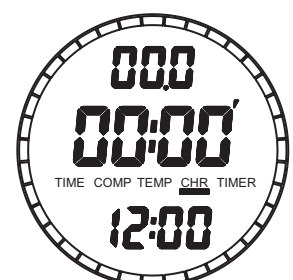
## Stopwatch Mode

Range: 23 hours 59 minutes and 59 seconds.

Field 1: seconds and tenths of a second

Field 2: hours and minutes

Field 3: current time



## How to use the Stopwatch

Press [S2] to start or stop the stopwatch.

When stopwatch is running, PRESS [S3] to show the LAP time.

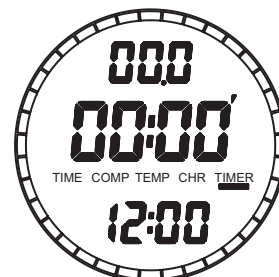
When stopwatch is stopped, PRESS [S3] to reset the stopwatch.

## Timer Mode

TIMECHRTEMPCOMPTIMER Field 1: timer seconds and tenths of a second

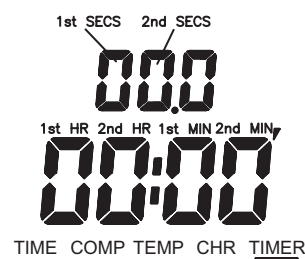
Field 2: timer hours and minutes

Field 3: current time



## How to set the Timer

1. Press [S1] to go to the timer mode with the "TIMER" indicator turned on.
2. Press [S3] sequentially to go to setting of the 1st HR digit, 2nd HR digit, 1st MIN digit, 2nd MIN digit, 1st SECS digit and 2nd SECS digit with the corresponding digits flashing.
3. Press [S2] to adjust the flashing digits.
4. Press [S3] to exit timer set when the 2nd SECS digit is set.



## How to start the Timer

1. Press [S2] to start, stop, or restart the timer.
2. When the timer reaches 0hr 0min 0sec, the timer returns automatically to the originally set time and beep for 30sec. When the timer sounds press any button to stop the beeping.

## REPLACING THE BATTERY

Avoid touching any electrical components on the PCB when the back cover is removed.

When the display becomes dim or turned off, battery replacement is necessary. Unscrew and remove the back cover. Replace with fresh Lithium battery CR2032 or equivalent. Use a small metal tool (such as tweezers or screw driver) to momentarily short circuit the AC pads. Re-screw the back cover. A compass calibration should be done every time the battery is replaced.

## THE WARRANTY DOES NOT COVER THE BATTERY

